



STANDARD FEATURES



Hydraulic self-levelling ram and stabilizer bar for undulating ground



High quality European 26" or 28" 6mm or 8mm Discs scalloped front/rear (or plain)



Heavy duty greaseable taper-roller disc bearings - water and dust proof seals for longer life



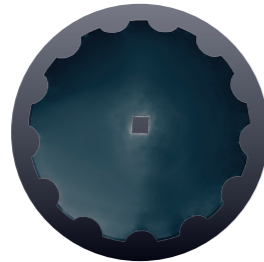
Hydraulic disc angle adjustment front and rear



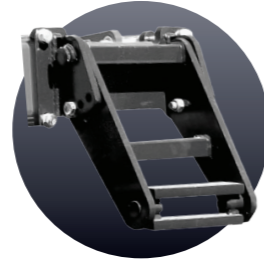
OPTIONS



Rear Rollers available; Flat or Round bar cage, Packer



High quality European discs 26" or 28" 6mm or 8mm Thick



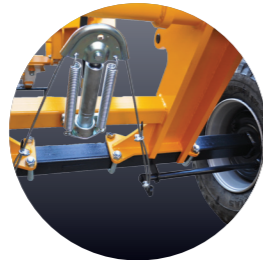
Rear draw bar



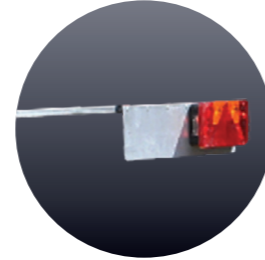
Hydraulic draw bar adjustment



Electro valves for multiple hydraulic operations



Hydraulic brakes



Road lights



HEAVY DUTY OFFSET DISC HARROWS

Heavy duty Offset Disc Harrows manufactured in Spain to meet the demands of the hardest soil and climatic environments. Designed for both primary and secondary soil cultivation. Built as tough as a BULL with long life, low maintenance and simple operation in mind from one of Europe's largest disc harrow manufacturers.



GEA SERIES FIXED FRAME 3.05 TO 4.05m

EOS SERIES HYDRAULIC FOLDING FRAME 3.05 TO 5.88m

YOUR LOCAL DEALER IS:

PO Box 673 Cambridge 3450
57 Hautapu Road, Cambridge, New Zealand
Ph: +64 7 823 7582 Fax: +64 7 823 7583
Email: info@originagroup.co.nz

Proudly Imported and Distributed by



Your Farm Equipment Co-operative

www.originagroup.co.nz

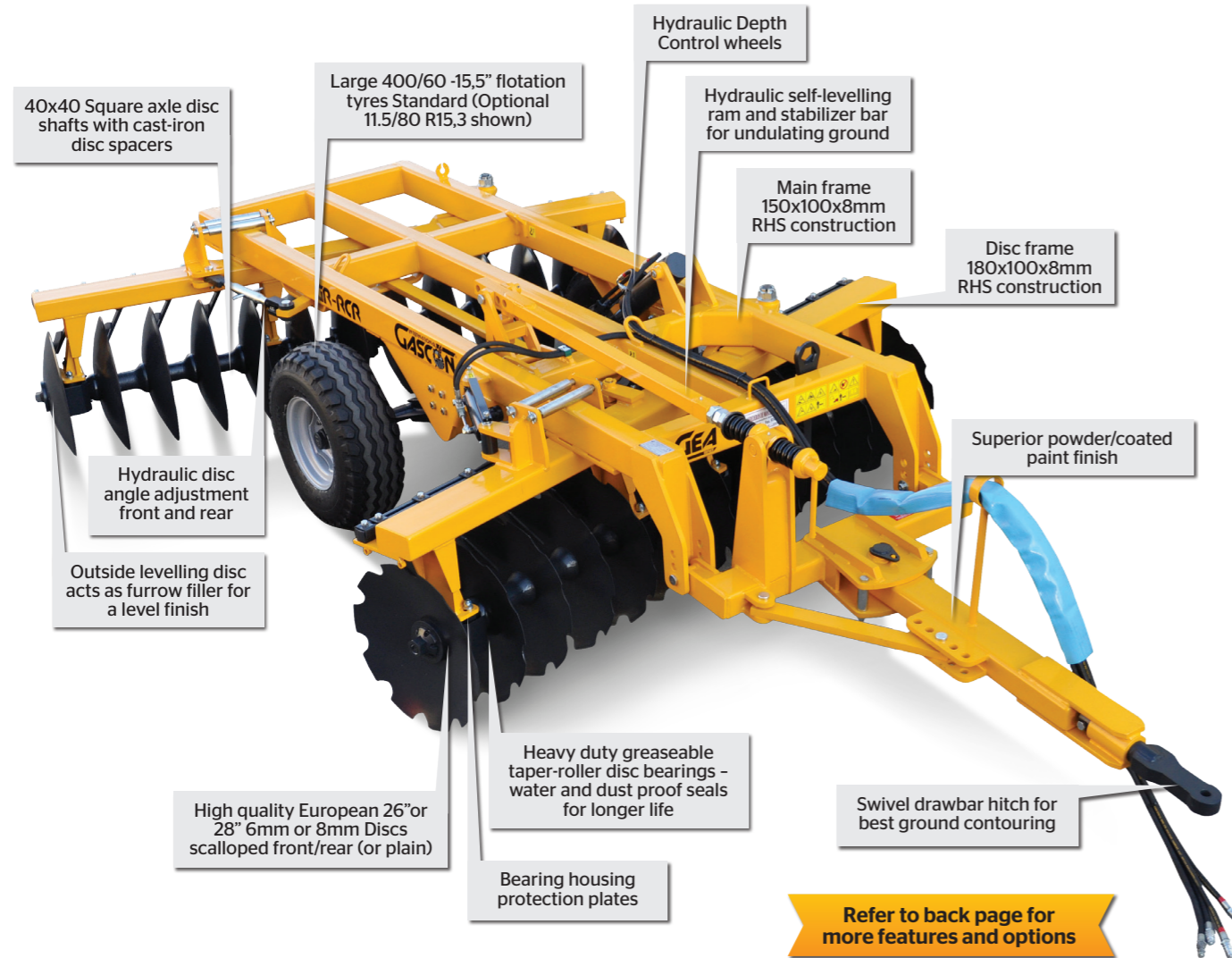
DISCLAIMER: This publication is intended to provide reasonable information relating to the subject matter contained herein. However specifications and product designs are subject to change without prior notice therefore no liability for damages in respect of or arising out of this information will be accepted. Please check that the information contained is current at time of purchase.



GEA SERIES FIXED FRAME

3.05m to 4.05m widths
100 to 180Hp rated

GEA models are made for farmers and contractors alike. Constructed from high quality European RHS steel to withstand tough operating conditions with superior disc weight, putting the GEA in a class of its own when comparing weight for value.



MODEL : GEA-RCR (Fixed Frame) c/w 660 x 6mm (26") Discs

MODEL	Work/Transport Width	No. Discs	Disc Spacing	Max Depth	No. Bearings	Tyres	HP Min/Max	Weight
GR-RCR305-26/6	3.05m	26	240mm	250mm (10")	8	400/60-15,5"	100-180	2800Kg
GR-RCR355-30/6	3.55m	30	240mm	250mm (10")	12	400/60-15,5"	120-180	3000Kg
GR-RCR405-34/6	4.05m	34	240mm	250mm (10")	12	400/60-15,5"	140-180	3200Kg

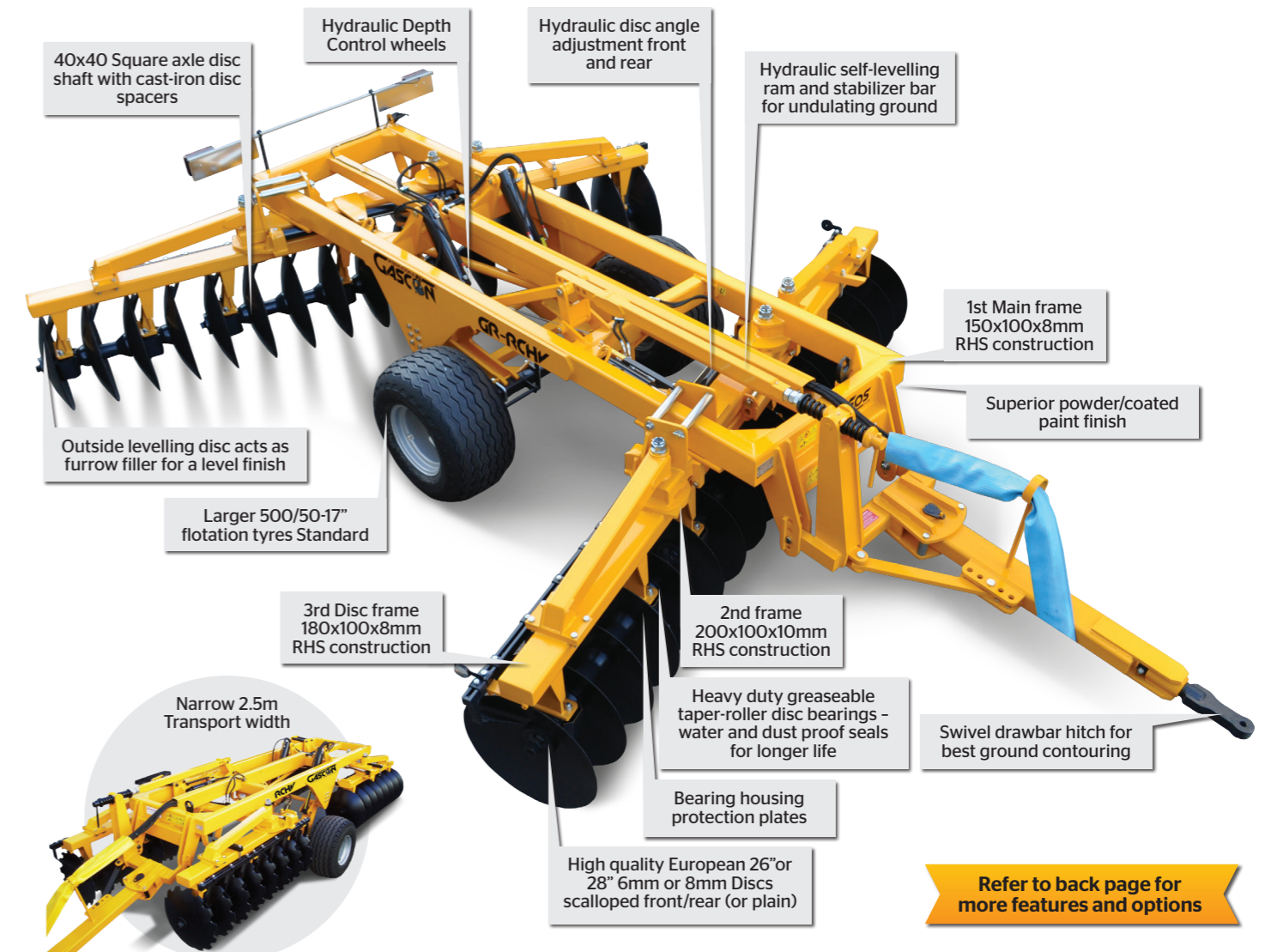
MODEL : GEA-RCR (Fixed Frame) c/w 710 x 8mm (28") Discs

MODEL	Work/Transport Width	No. Discs	Disc Spacing	Max Depth	No. Bearings	Tyres	HP Min/Max	Weight
GR-RCR316-24/8	3.16m	24	275mm	275mm (12")	8	400/60-15,5"	110-180	3075Kg
GR-RCR343-26/8	3.43m	26	275mm	275mm (12")	8	400/60-15,5"	130-180	3180Kg
GR-RCR397-30/8	3.97m	30	275mm	275mm (12")	12	400/60-15,5"	150-180	3400Kg

EOS SERIES HYDRAULIC FOLDING FRAME

3.05m to 5.88m widths
110 to 240Hp rated

EOS models are made for larger farmers and contractors alike. Constructed from high quality RHS European steel - with a unique reinforced 3 x stage frame construction to withstand tougher operating conditions, putting the EOS in a higher class of its own when comparing weight for value.



MODEL : EOS-RCHV (Hydraulic Folding) c/w 660 x 8mm (26") Discs

MODEL	Work/Transport Width	No. Discs	Disc Spacing	Max Depth	No. Bearings	Tyres	HP Min/Max	Weight
GR-RCHV305-26/8	3.05m/2.5m	26	240mm	250mm (10")	8	500/50-17"	110-240	3830kg
GR-RCHV355-30/8	3.55m/2.5m	30	240mm	250mm (10")	8	500/50-17"	130-240	4050Kg
GR-RCHV405-34/8	4.05m/2.5m	34	240mm	250mm (10")	14	500/50-17"	150-240	4470Kg
GR-RCHV455-38/8	4.55m/2.5m	38	240mm	250mm (10")	16	500/50-17"	170-240	4790Kg
GR-RCHV505-42/8	5.05m/2.5m	42	240mm	250mm (10")	16	500/50-17"	190-240	5010Kg
GR-RCHV530-44/8	5.30m/2.5m	44	240mm	250mm (10")	16	500/50-17"	200-240	5120Kg

MODEL : EOS-RCHV (Hydraulic Folding) c/w 710 x 8mm (28") Discs

MODEL	Work/Transport Width	No. Discs	Disc Spacing	Max Depth	No. Bearings	Tyres	HP Min/Max	Weight
GR-RCHV316-24/8	3.16m/2.5m	24	270mm	275mm (12")	8	500/50-17"	110-240	4120kg
GR-RCHV343-26/8	3.43m/2.5m	26	270mm	275mm (12")	8	500/50-17"	120-240	4230Kg
GR-RCHV397-30/8	3.97m/2.5m	30	270mm	275mm (12")	12	500/50-17"	140-240	4450Kg
GR-RCHV451-34/8	4.51m/2.5m	34	270mm	275mm (12")	14	500/50-17"	160-240	4870Kg
GR-RCHV532-40/8	5.32m/2.5m	40	270mm	275mm (12")	16	500/50-17"	190-240	5200Kg
GR-RCHV588-44/8	5.88m/2.5m	44	270mm	275mm (12")	16	500/50-17"	230-240	5520Kg