

How to update your John Deere StarFire™ Receiver



JOHN DEERE



DRUMMOND
& ETHERIDGE

BEFORE YOU START...



The stronger your cell coverage is, the quicker the update will be
(could be 40 mins or more).



Do NOT turn the Key or Machine off once update has started.



If you get stuck, call your local branch on [0800 432 633](tel:0800432633)

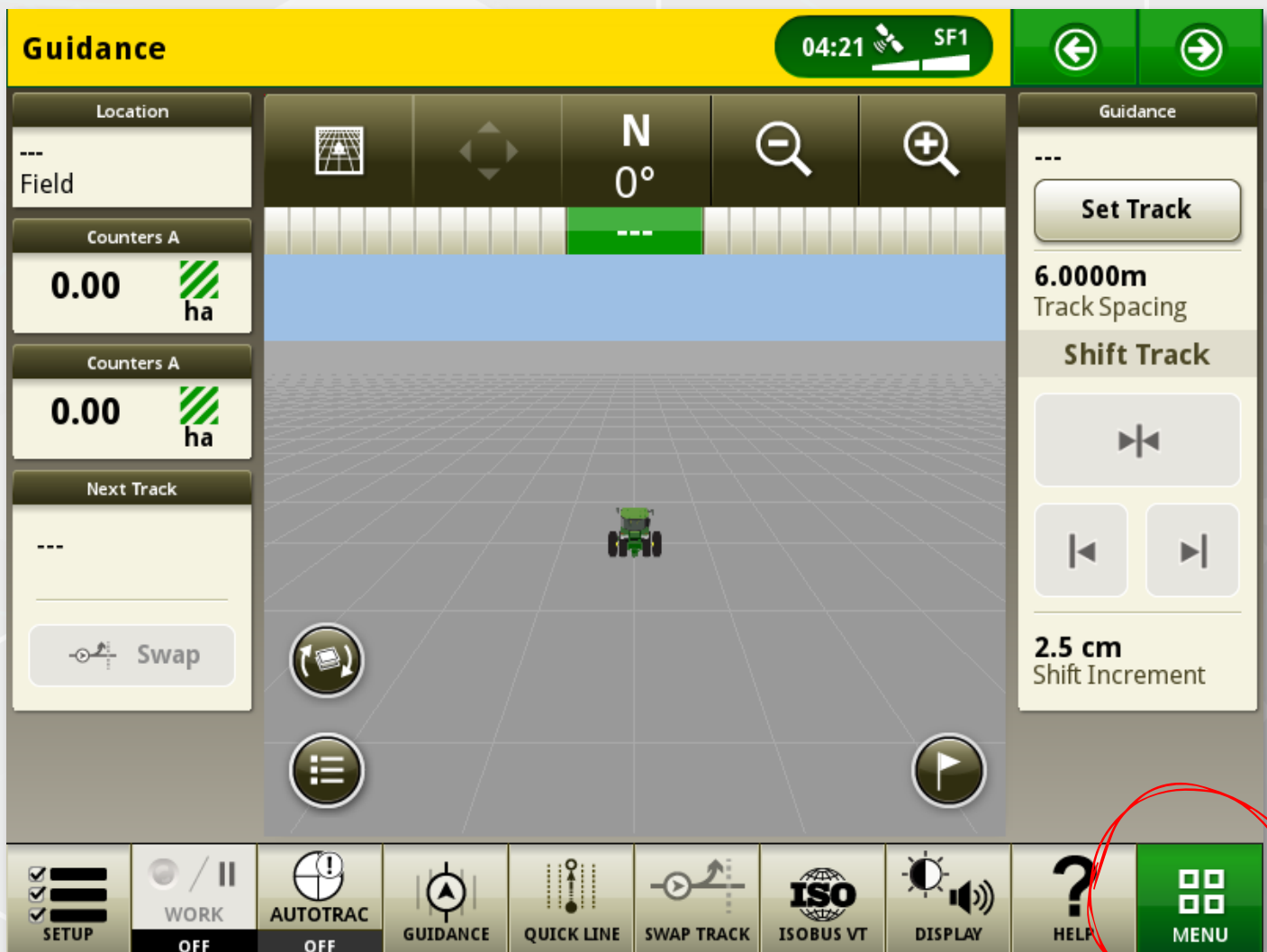


JOHN DEERE

DE DRUMMOND
& ETHERIDGE

1

Start by pressing MENU



JOHN DEERE

DE DRUMMOND
& ETHERIDGE

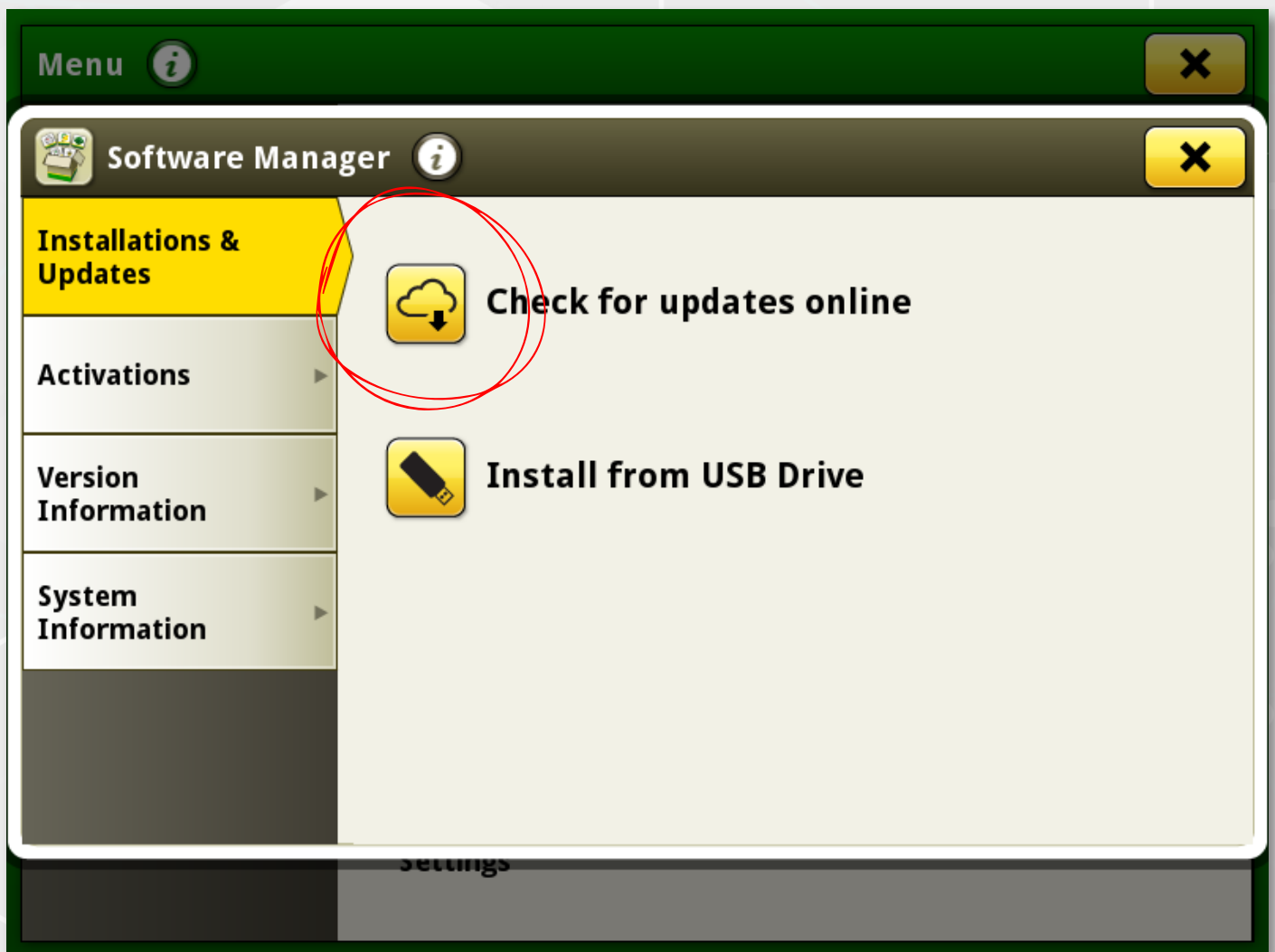
2&3.



JOHN DEERE

DE DRUMMOND
& ETHERIDGE

4 



JOHN DEERE

DE DRUMMOND
& ETHERIDGE

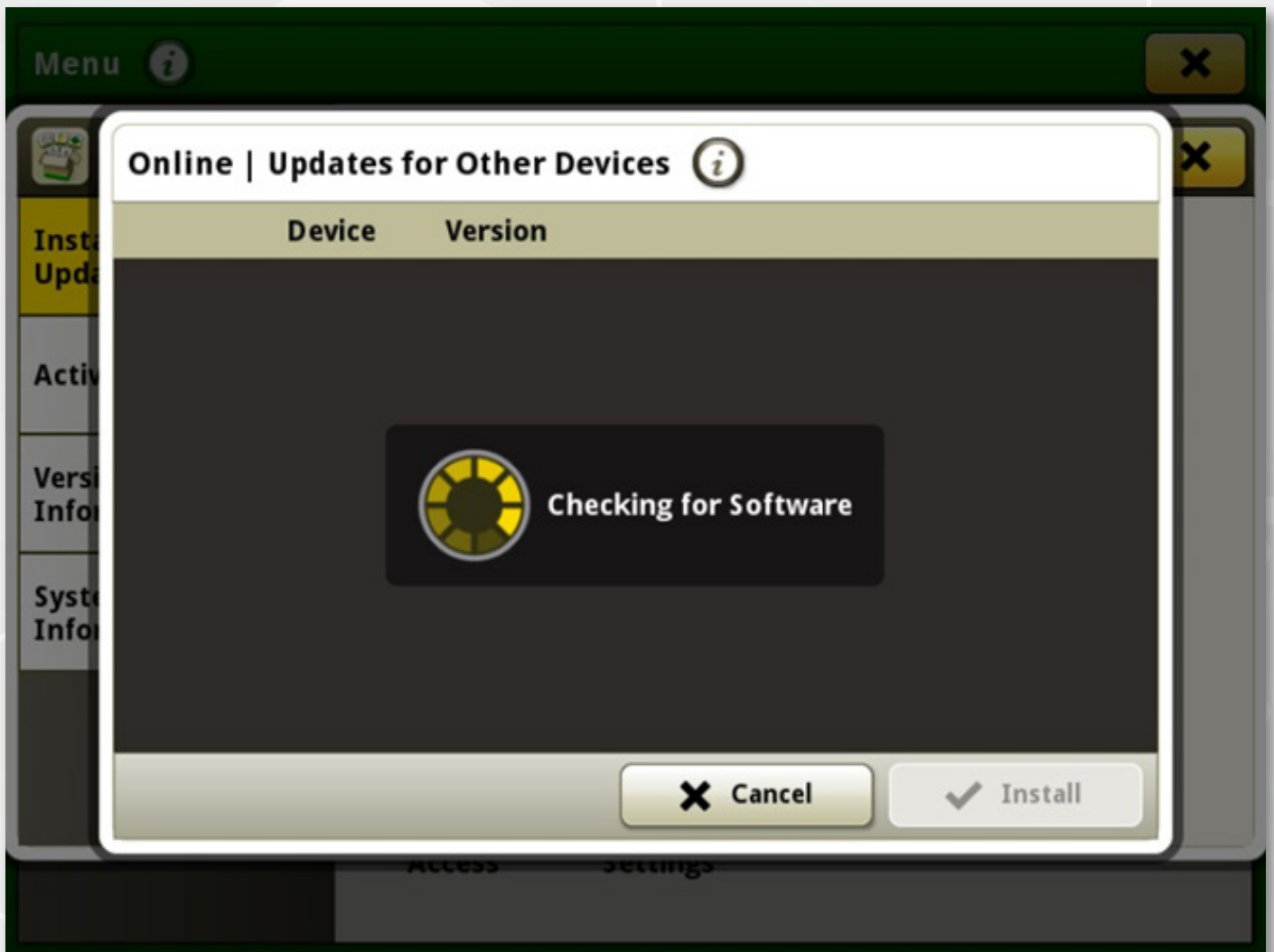
5&6.



JOHN DEERE

DE DRUMMOND
& ETHERIDGE

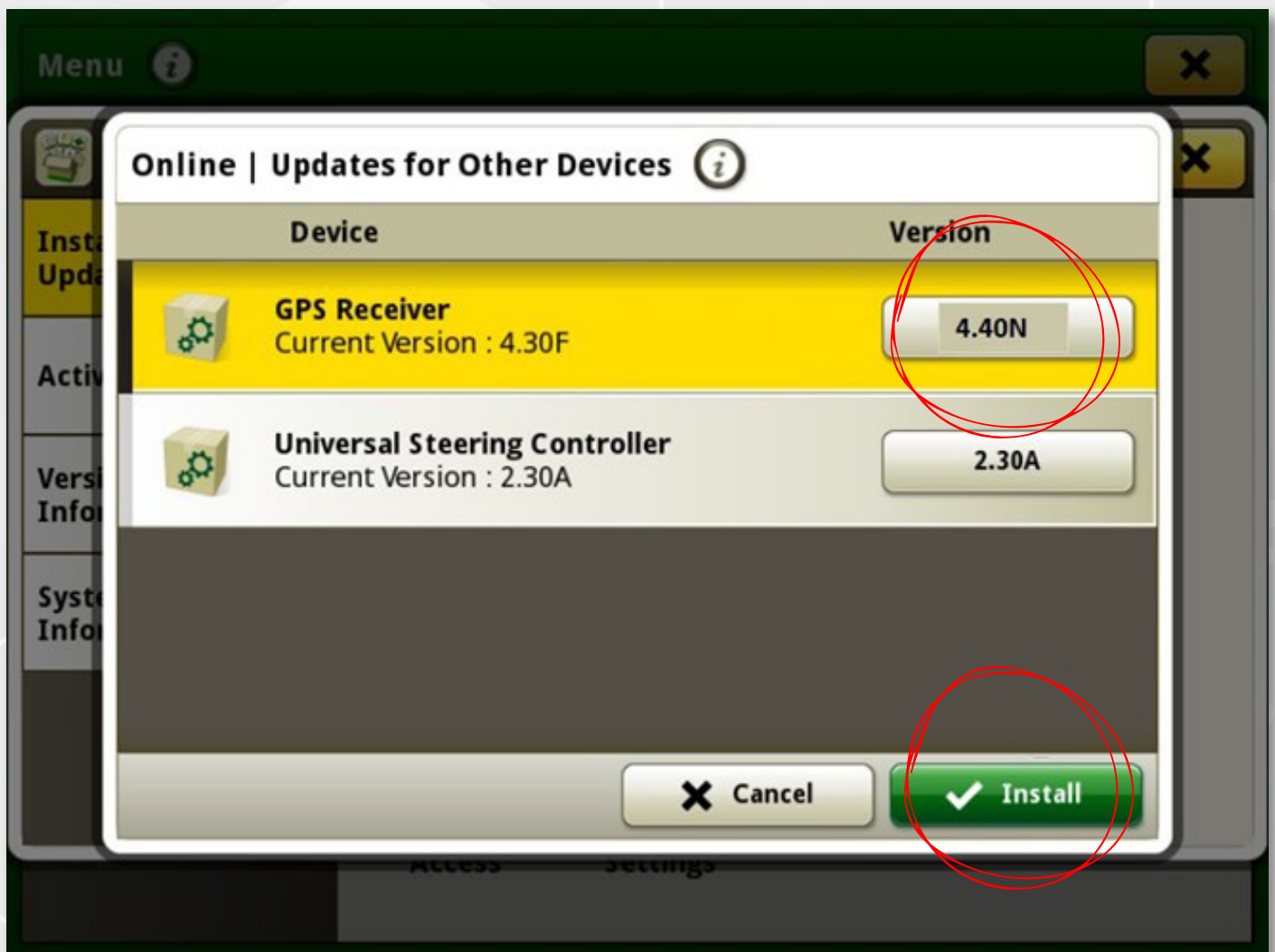
7. 



JOHN DEERE

DE DRUMMOND
& ETHERIDGE

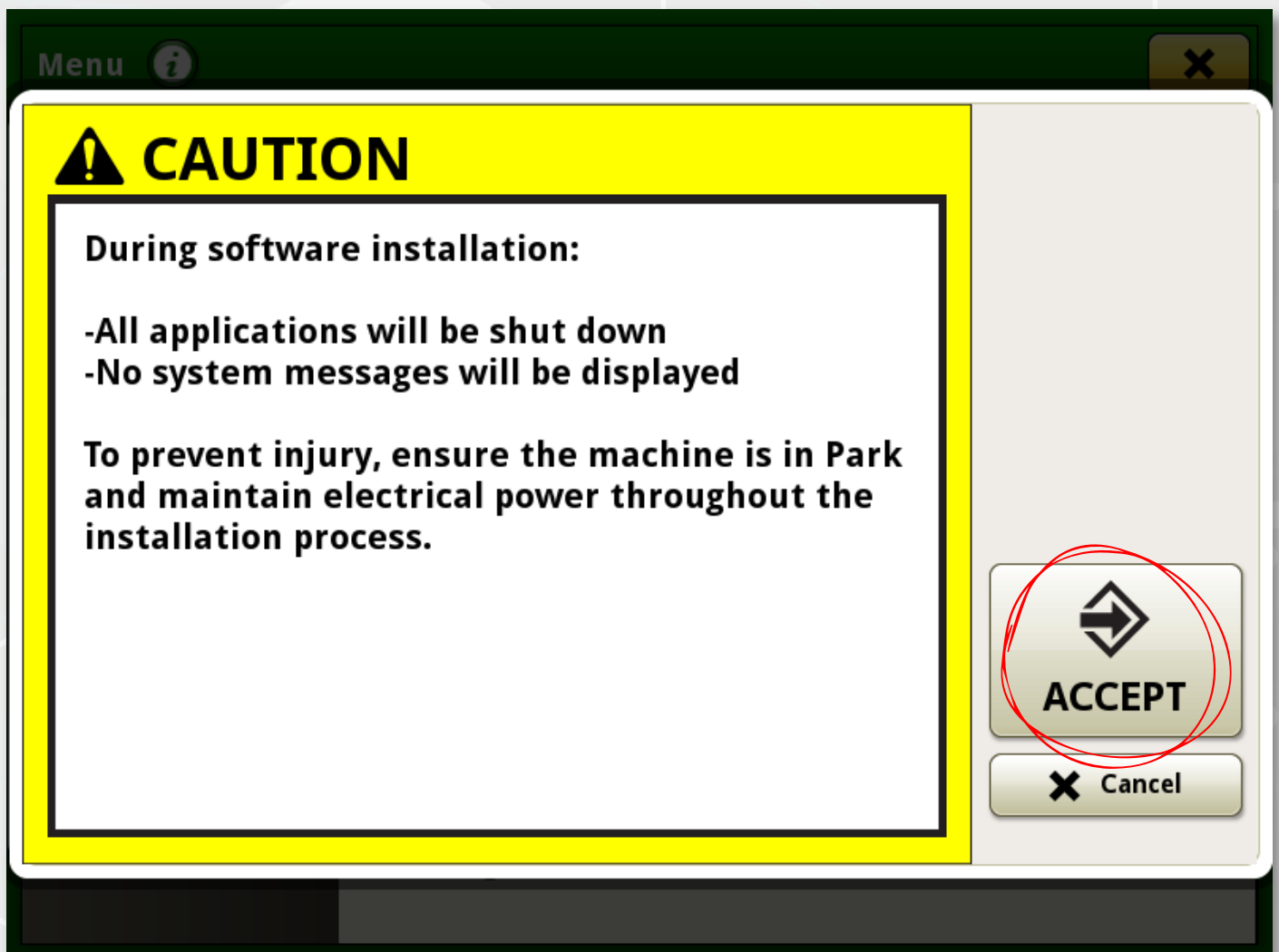
8&9.

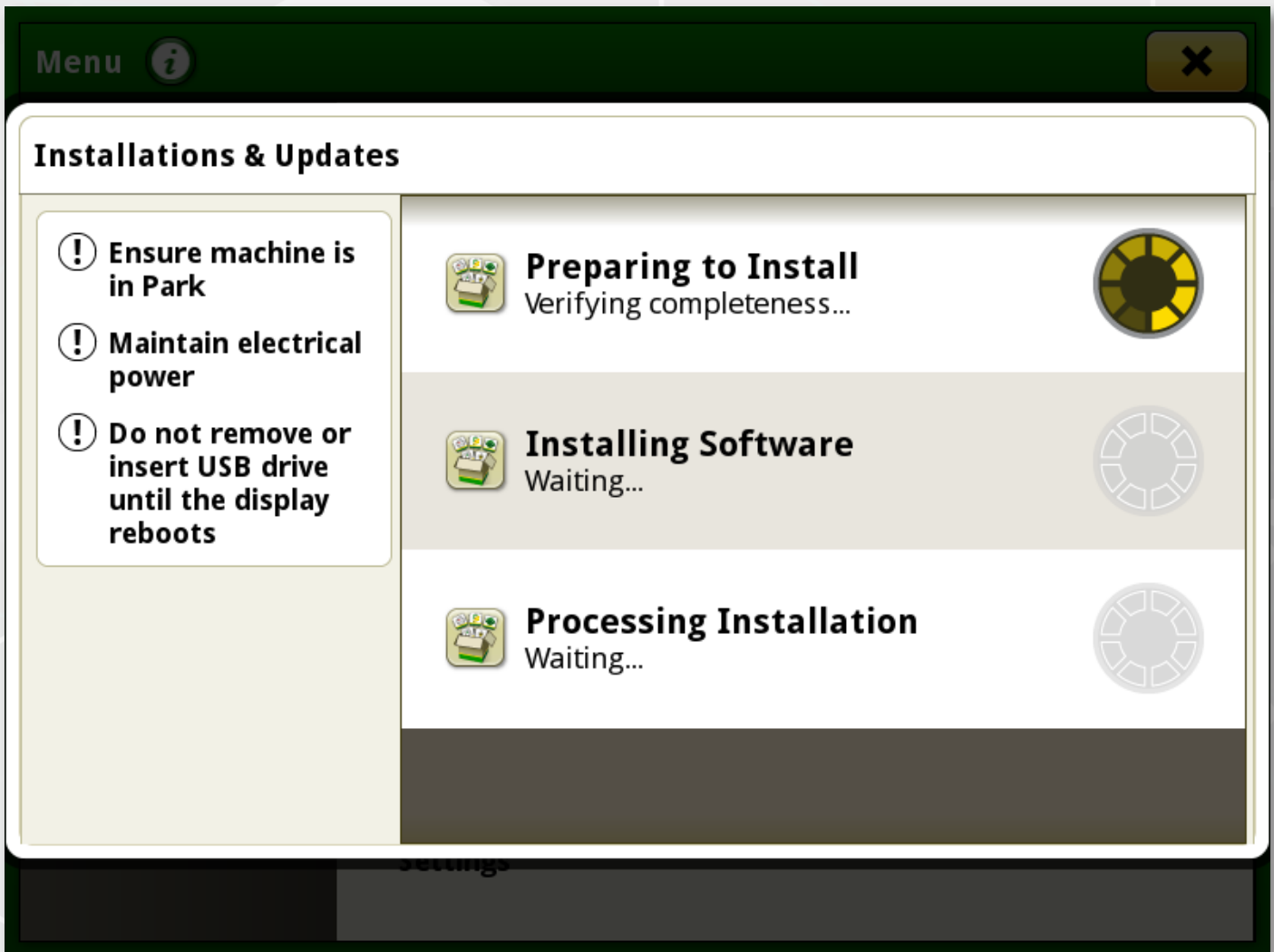


JOHN DEERE

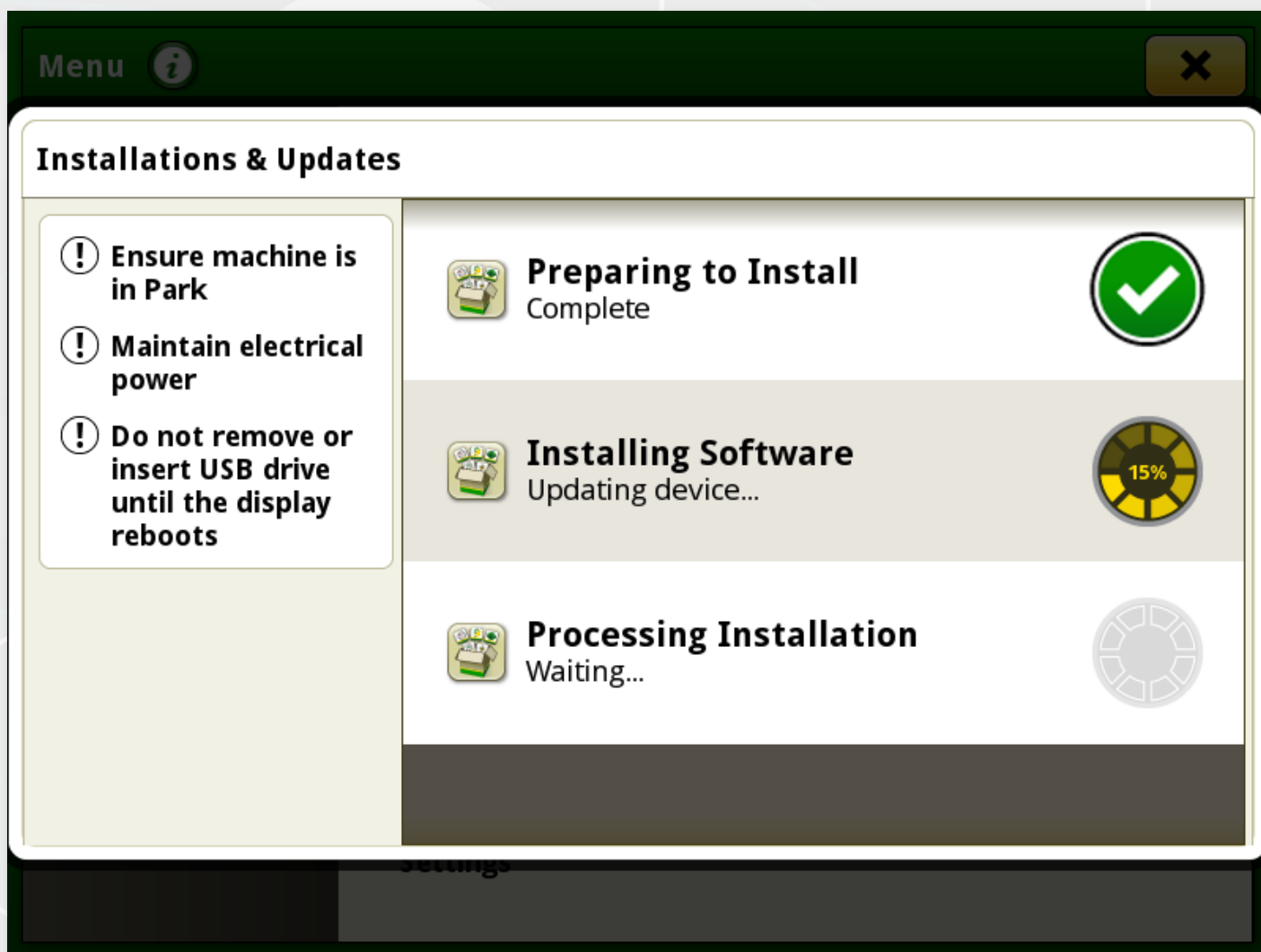
DE DRUMMOND
& ETHERIDGE

10. 





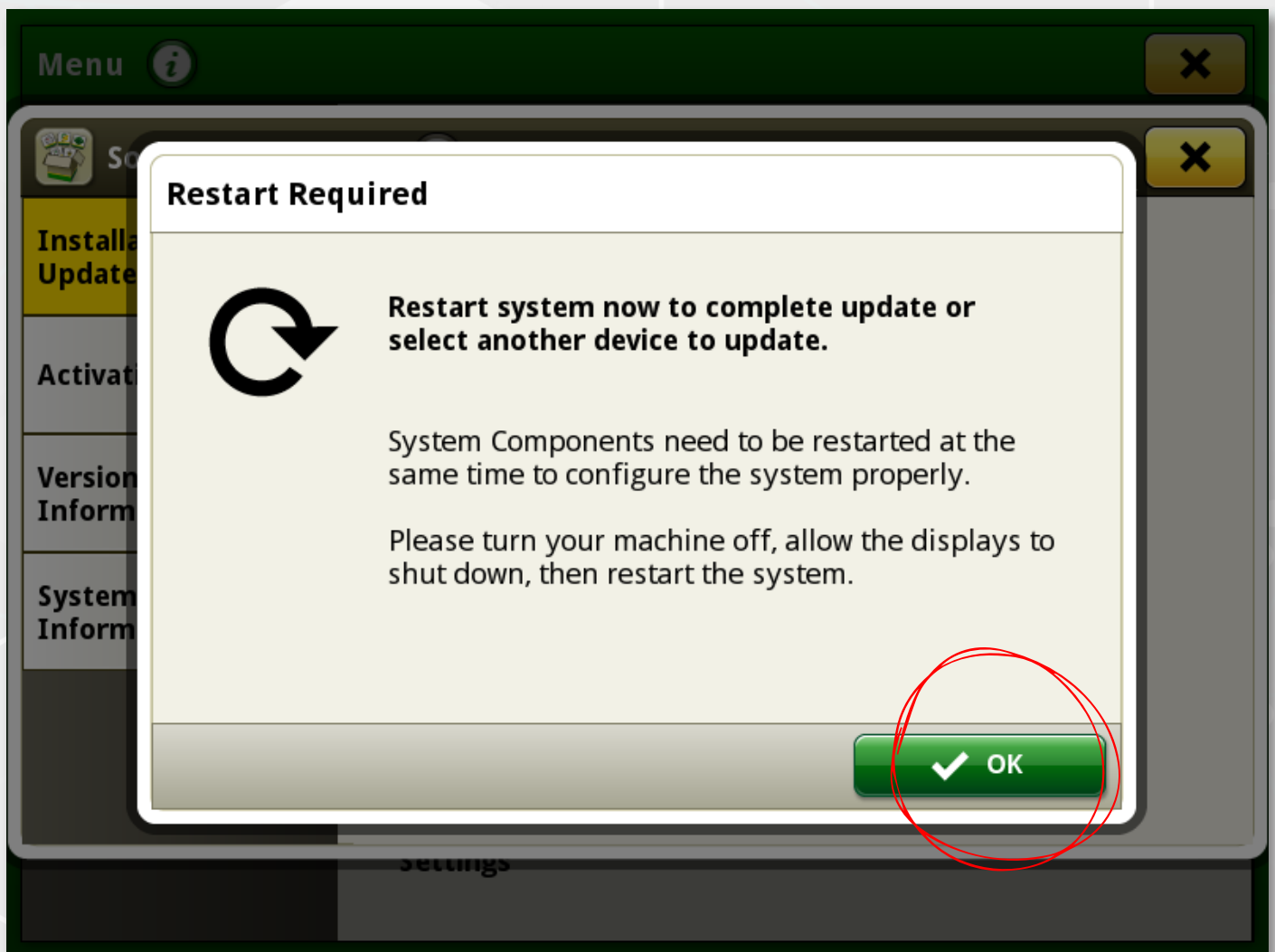
12.



JOHN DEERE

DE DRUMMOND
& ETHERIDGE

13.



JOHN DEERE



DRUMMOND
& ETHERIDGE

14. 


After Reboot:




JOHN DEERE


DE DRUMMOND
& ETHERIDGE



15.


Status Center 




StarFire 6000 HA
SW Version: 4.30F.0
SN: 321931




Accuracy  **80%**
Signal Str.  **15dB**





Machine Messages





Controls Setup

ISO Aux:



Remote Display Access

Duration: **00:00:00**

END

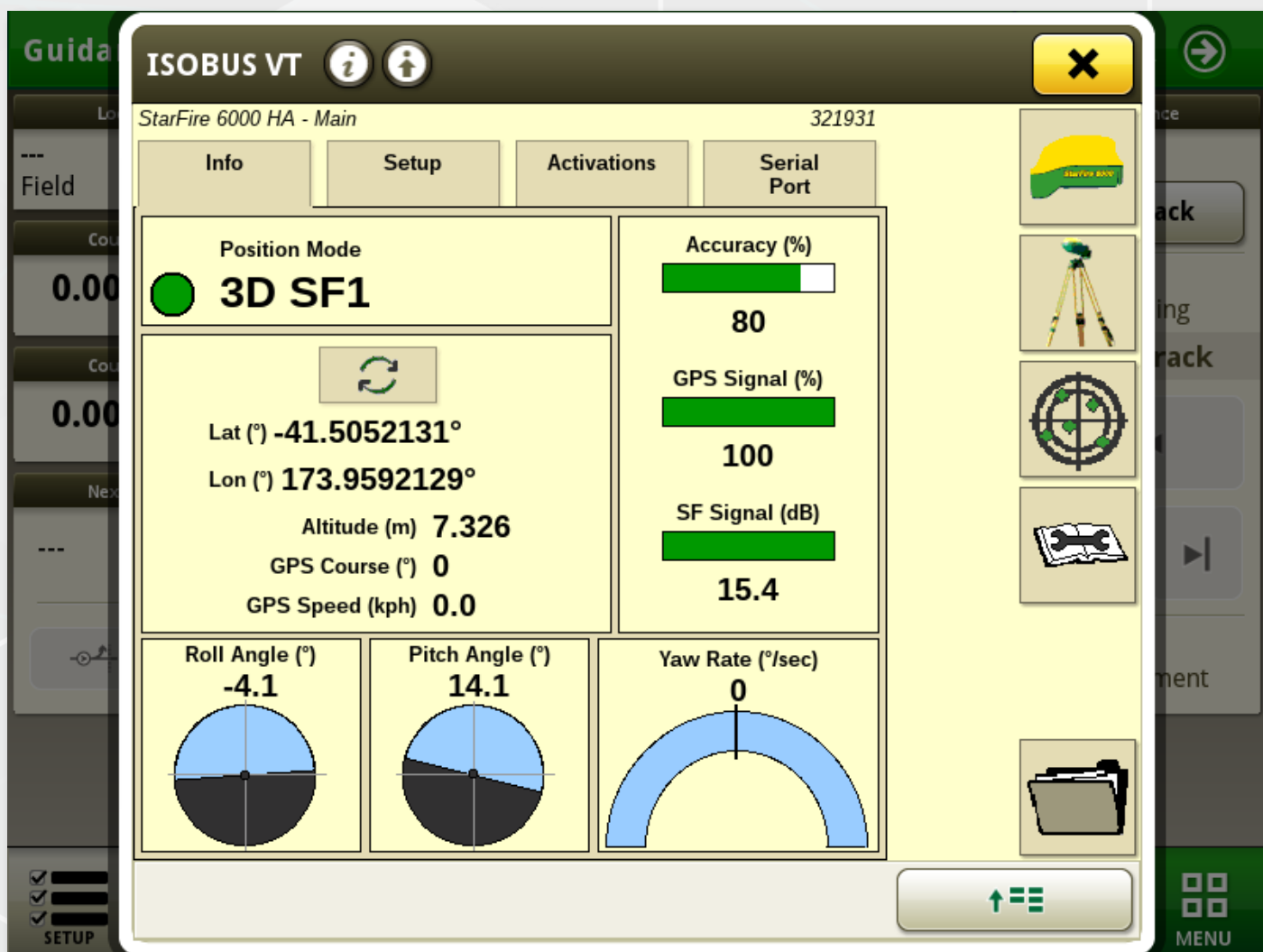


JOHN DEERE



DRUMMOND
& ETHERIDGE

16.



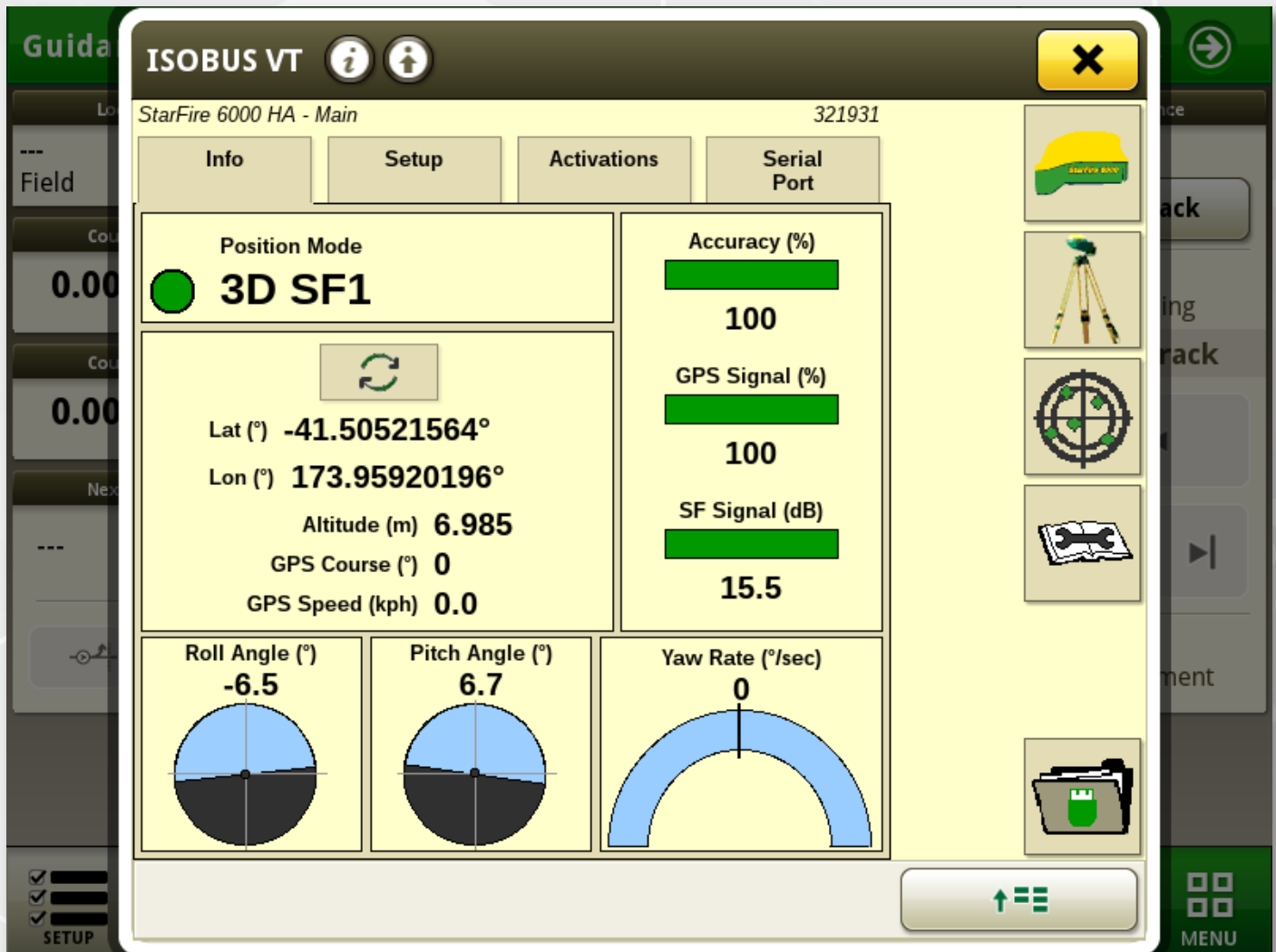
JOHN DEERE



DRUMMOND
& ETHERIDGE

16.

Wait several minutes
Could be 20-30 or more



JOHN DEERE

DE DRUMMOND
& ETHERIDGE